

Borehole: **CCW NUECES NO.12**

Water Well Logging & Video Recording Services

Logs: **GAMMA, RESISTIVITY, CALIPER**

Geo Cam, Inc. 17118 Classen rd. San Antonio, TX 78247 877-495-9121

Project: **CCW NUECES NO.12** Date: 10/12/25

Client: **WEISINGER** County: NUECES

Location: N 27° 54' 07.8" W 97° 46' 24.7" State: TX

Drilling Contractor: **WEISINGER** Driller T.D. (ft) : 870'

Elevation: 349' GPS Logger T.D. (ft) : 867'

Depth Ref: K.B. +8.0 AGL Date Drilled: 10/12/25

BOREHOLE DATA

BIT RECORD		CASING RECORD				
RUN	BIT SIZE (in)	FROM (ft)	TO (ft)	SIZE/WGT/THK	FROM (ft)	TO (ft)
1	12.25"	48'	TD	36" STEEL	GL	48'
2						
3						

Drill Method: Mud Rotary Weight: Fluid Level (ft) : FULL

Hole Medium: Mud Type: Time Since Circ:

Viscosity: Rm: at: Deg C

Logged by: C.ANDERSON Truck: 16

Witness:

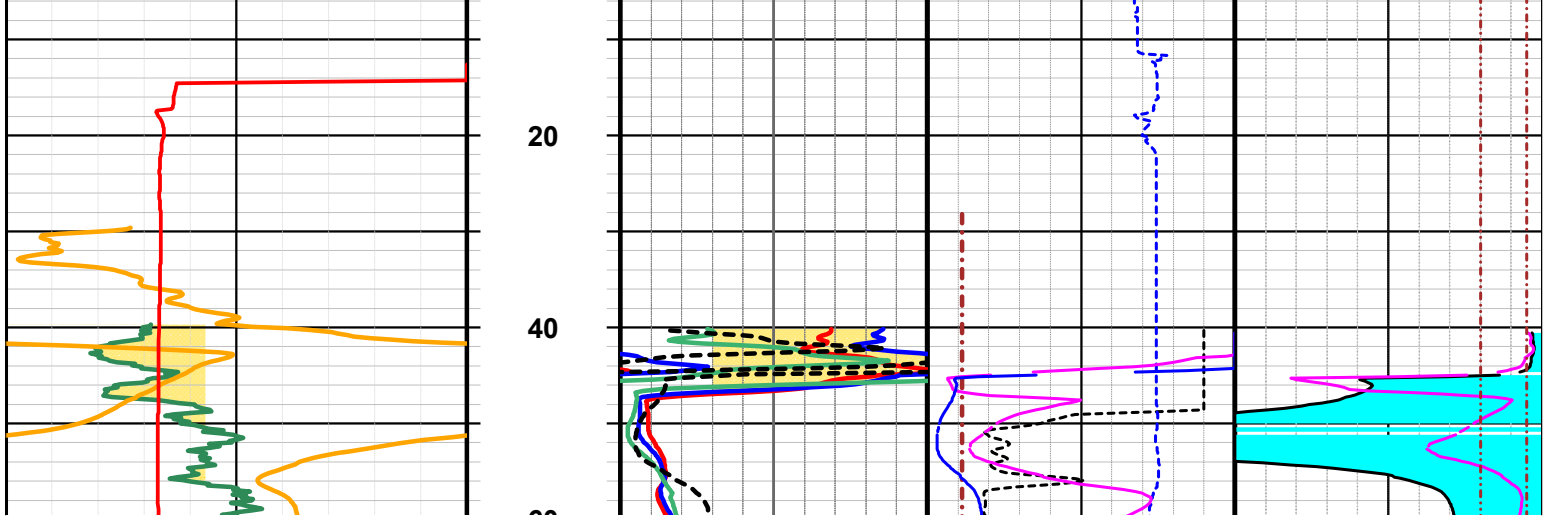
LOG TYPE	RUN NO	SPEED (ft/min)	FROM (ft)	TO (ft)	FT./IN.
GAMMA	2	35	853.8'	28.3'	20
RESISTIVITY	2	35	860.1'	34.6'	20
CALIPER	2	35	865.8'	40.4'	20

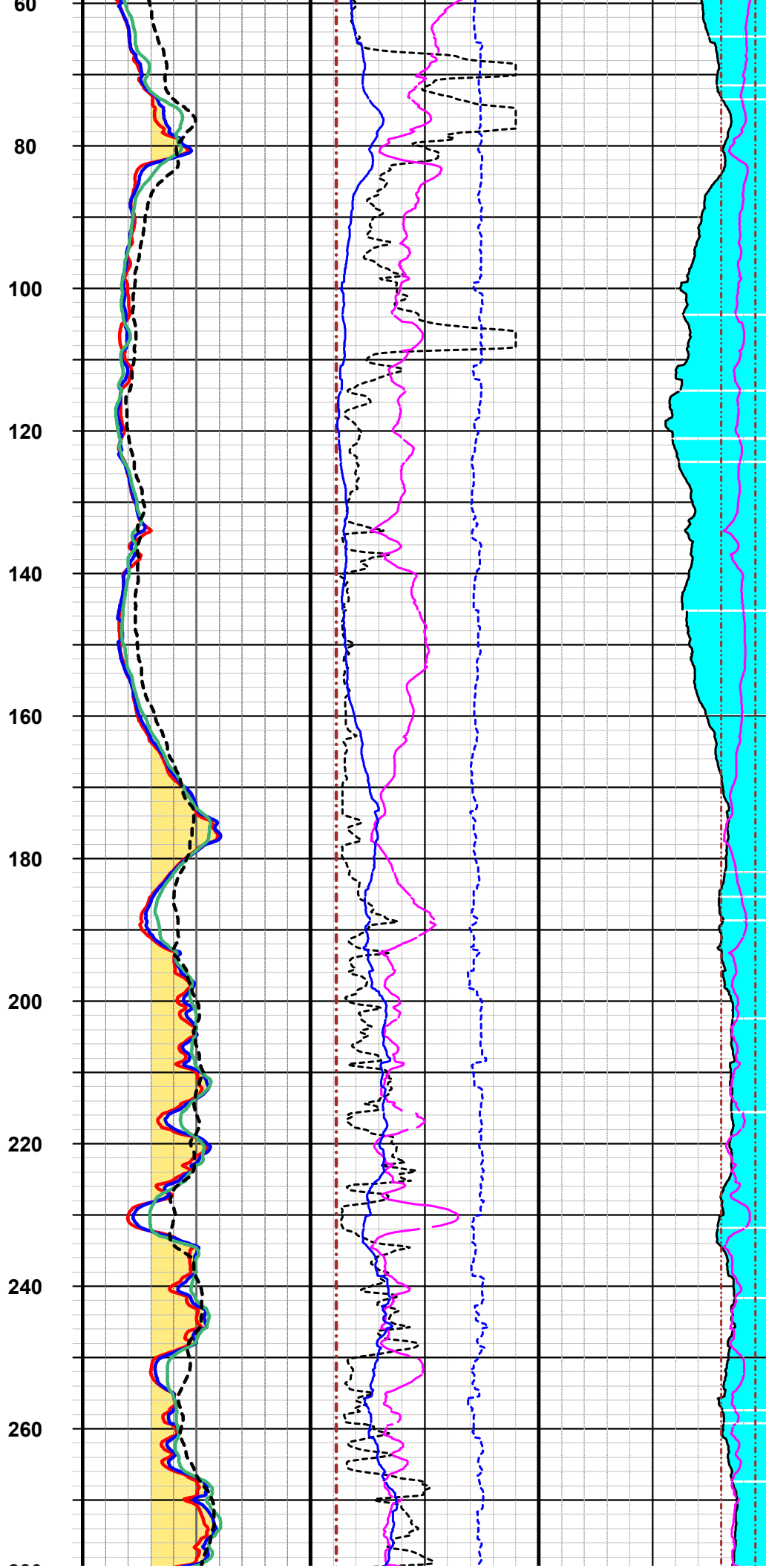
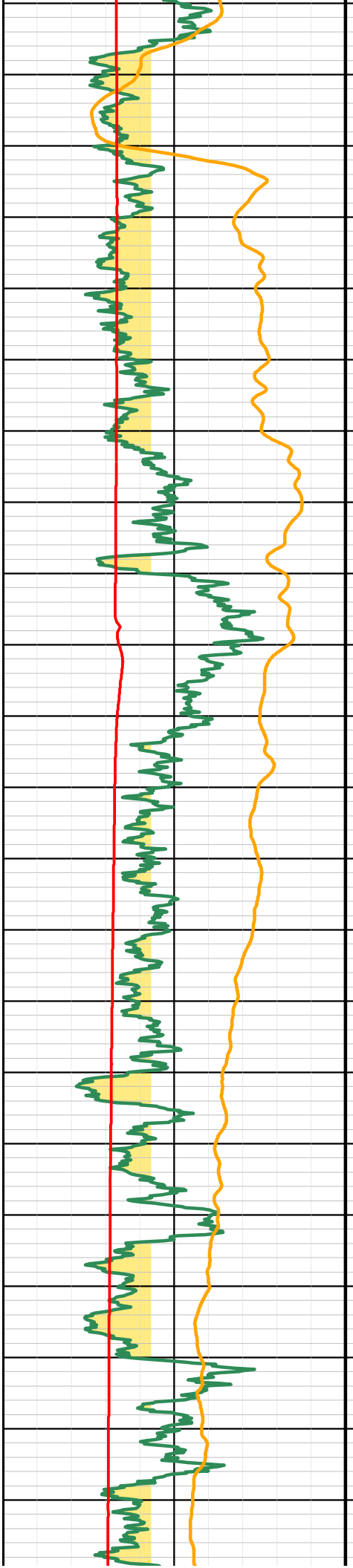
Tool Serial No. GAMMA (7320) RESISTIVITY (7179) CALIPER (7052)

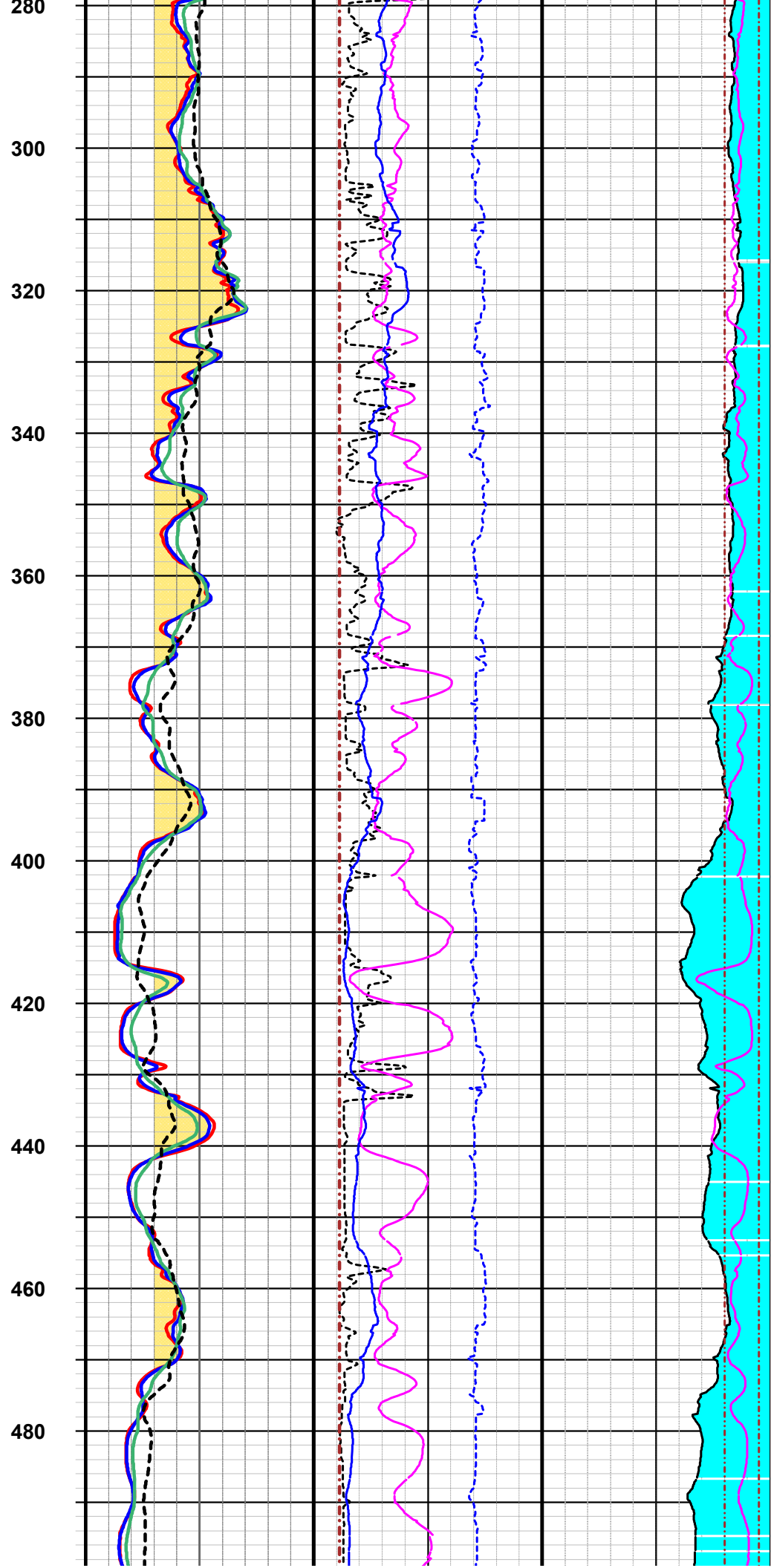
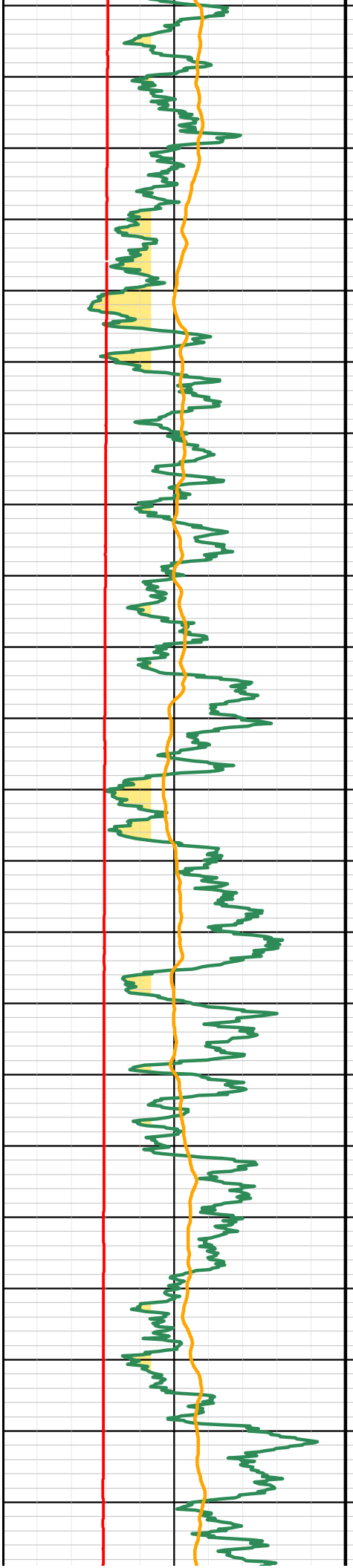
Comments: ALL MEASUREMENTS WERE TAKEN FROM KB.

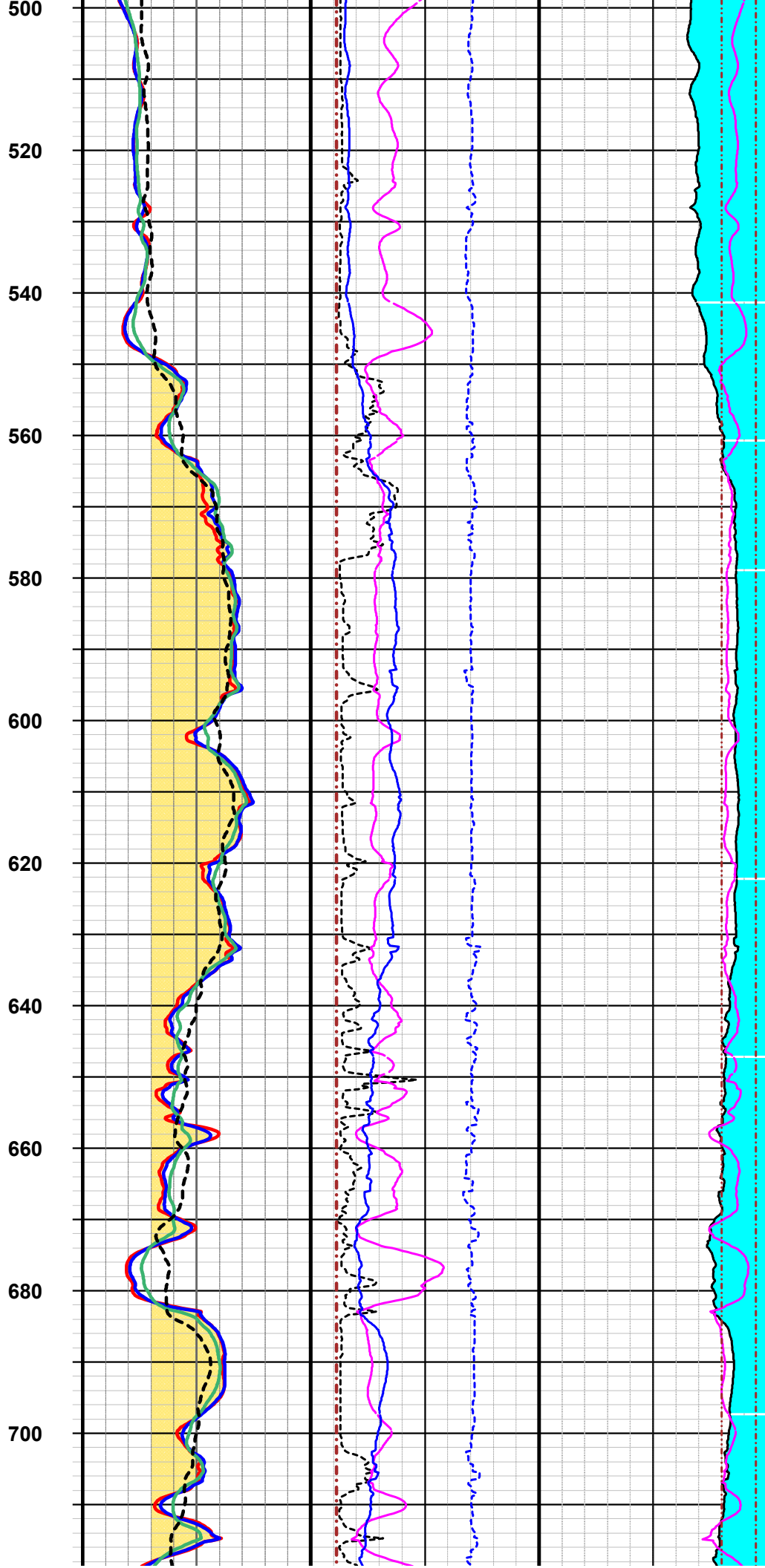
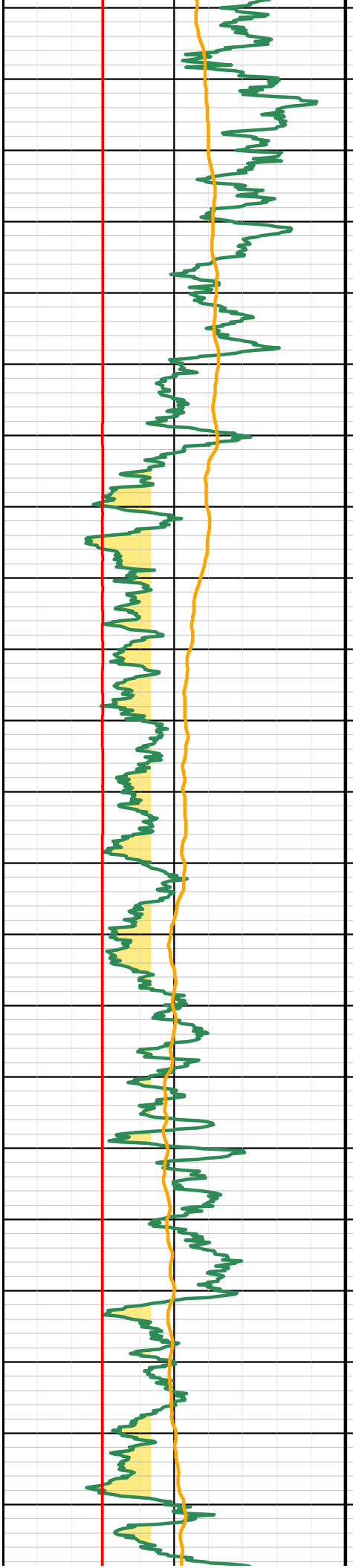
<b>Gamma Corr Hole Size</b> 0 GAPI 150	<b>Depth</b> 1in:20ft	<b>N8_Corr</b> 0 Ohm.m 20	<b>Caliper-In</b> 10 In 30	<b>TDS-NaCl-Humble_SS</b> 10000 0
<b>SP</b> 225 mV 425		<b>N16_Corr</b> 0 Ohm.m 20	<b>12.25" Bit Mark</b> 10 30	<b>TDS-NaCl-RwRatio</b> 10000 Mg/L 0
<b>FRes25C</b> 0 Ohm-M 10		<b>N32_Corr</b> 0 Ohm.m 20	<b>SPor-RH</b> 0.1 0.6	<b>500 Mg/L</b> 10000 Mg/L 0
<b>&lt; 65 GAPI</b>		<b>N64_Corr</b> 0 Ohm.m 20	<b>Rw-Res-Ratio</b> 0 Ohm-M 10	<b>2000 Mg/L</b> 10000 Mg/L 0
		<b>&gt;6 Ohm-M</b>	<b>Rw-Humble_SS</b> 0 10	

## Corpus Christi Nueces Well No. 12 Est. Water Quality Summary

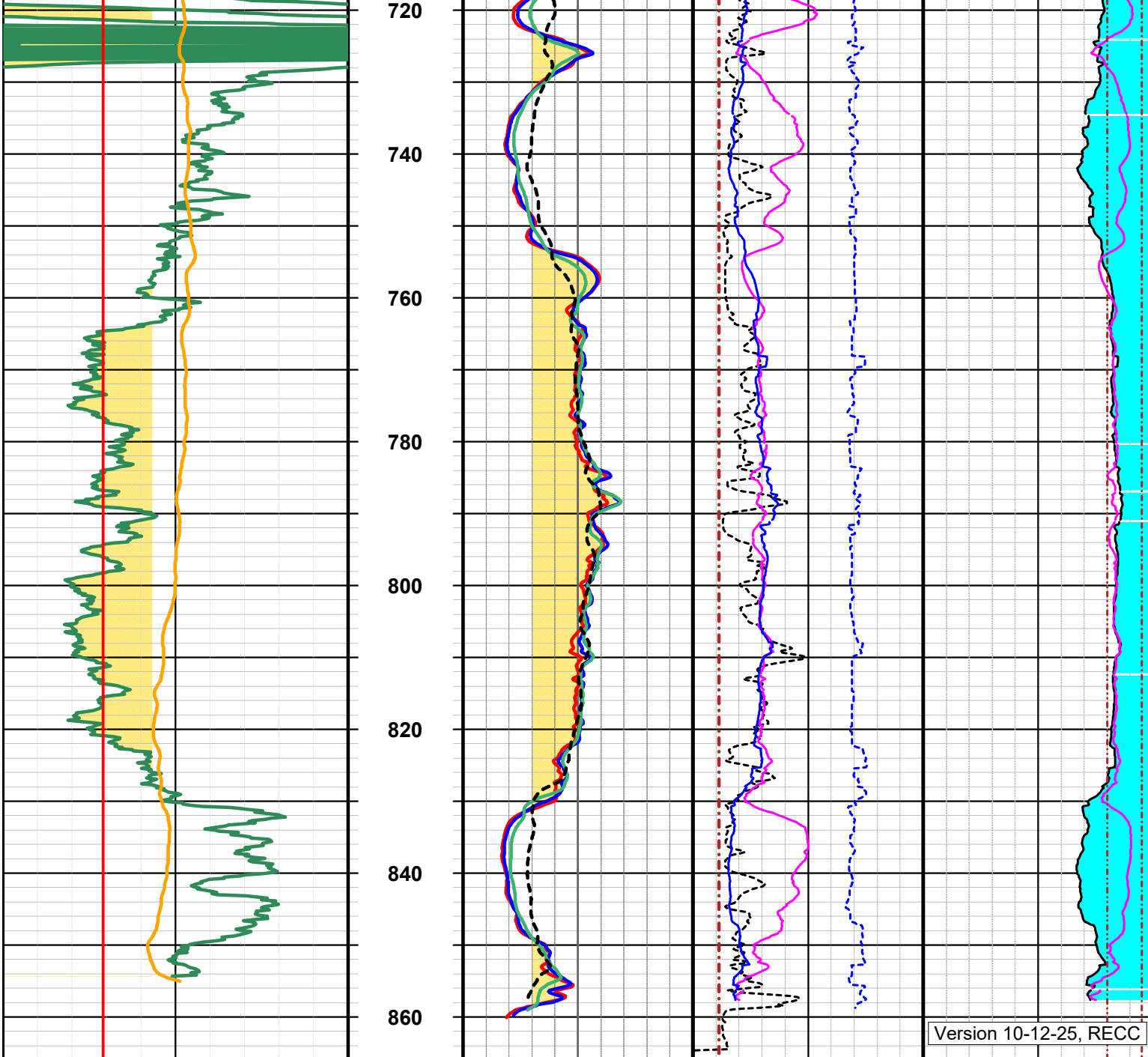








500  
520  
540  
560  
580  
600  
620  
640  
660  
680  
700



Version 10-12-25, RECC

## Corpus Christi Nueces Well No. 12 Est. Water Quality Summary

	 <b>&gt;6 Ohm-M</b> 0 Ohm.m 20	 <b>Rw-Humble SS</b> 0 Ohm-M 10	 <b>2000 Mg/L</b> 10000 Mg/L 0
 <b>&lt; 65 GAPI</b> 0 Ohm-M 10	 <b>N64 Corr</b> 0 Ohm.m 20	 <b>Rw-Res-Ratio</b> 0.1 0.6	 <b>500 Mg/L</b> 10000 Mg/L 0
 <b>FRes25C</b> 225 mV 425	 <b>N32 Corr</b> 0 Ohm.m 20	 <b>SPor-RH</b> 10 30	 <b>10000 Mg/L</b> 10000 Mg/L 0
 <b>SP</b> 0 GAPI 150	 <b>N16 Corr</b> 0 Ohm.m 20	 <b>12.25" Bit Mark</b> 10 In 30	 <b>TDS-NaCl-RwRatio</b> 10000 0
 <b>Gamma Corr Hole Size</b>	 <b>N8 Corr</b>	 <b>Caliper-In</b>	 <b>TDS-NaCl-Humble SS</b>
1in:20ft	Depth		