

Borehole: CCW WELL NO.10

Logs: GAMMA, RESISTIVITY, CALIPER

Water Well Logging & Video Recording Services

Geo Cam, Inc. 17118 Classen rd. San Antonio, TX 78247 877-495-9121

Project: CCW WELL NO.10 Date: 08/23/25

Client: WEISINGER County: NUECES

Location: N 27° 54' 18.9" W 97° 46' 33.5" State: TX

BOREHOLE DATA

Drilling Contractor: WEISINGER Driller T.D. (ft) : 858'

Elevation: 34' GPS Logger T.D. (ft) : 858'

Depth Ref: RT = +8.0' AGL Date Drilled: 08/23/25

BIT RECORD			CASING RECORD			
RUN	BIT SIZE (in)	FROM (ft)	TO (ft)	SIZE/WGT/THK	FROM (ft)	TO (ft)
1	12.25"	65'	TD	36" STEEL	GL	65'
2						
3						

Drill Method: MUD ROTARY Weight: Fluid Level (ft) : FULL

Hole Medium: Mud Type: Time Since Circ:

Viscosity: Rm: at: Deg C

GENERAL DATA

Logged by: COLTON A. Unit/Truck: 16

Witness:

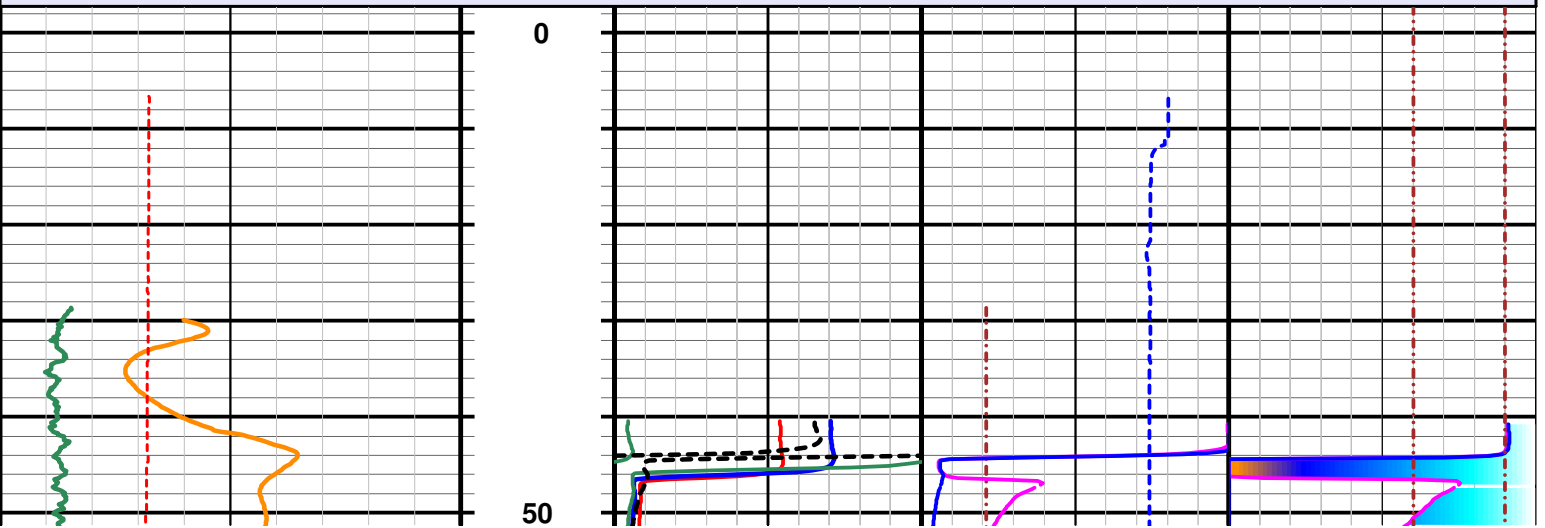
LOG TYPE	RUN NO	SPEED (ft/min)	FROM (ft)	TO (ft)	FT./IN.
GAMMA	1	35	844.7'	28.6'	20
RESISTIVITY	1	35	851.0'	34.9'	20
CALIPER	1	35	856.8'	40.6'	20

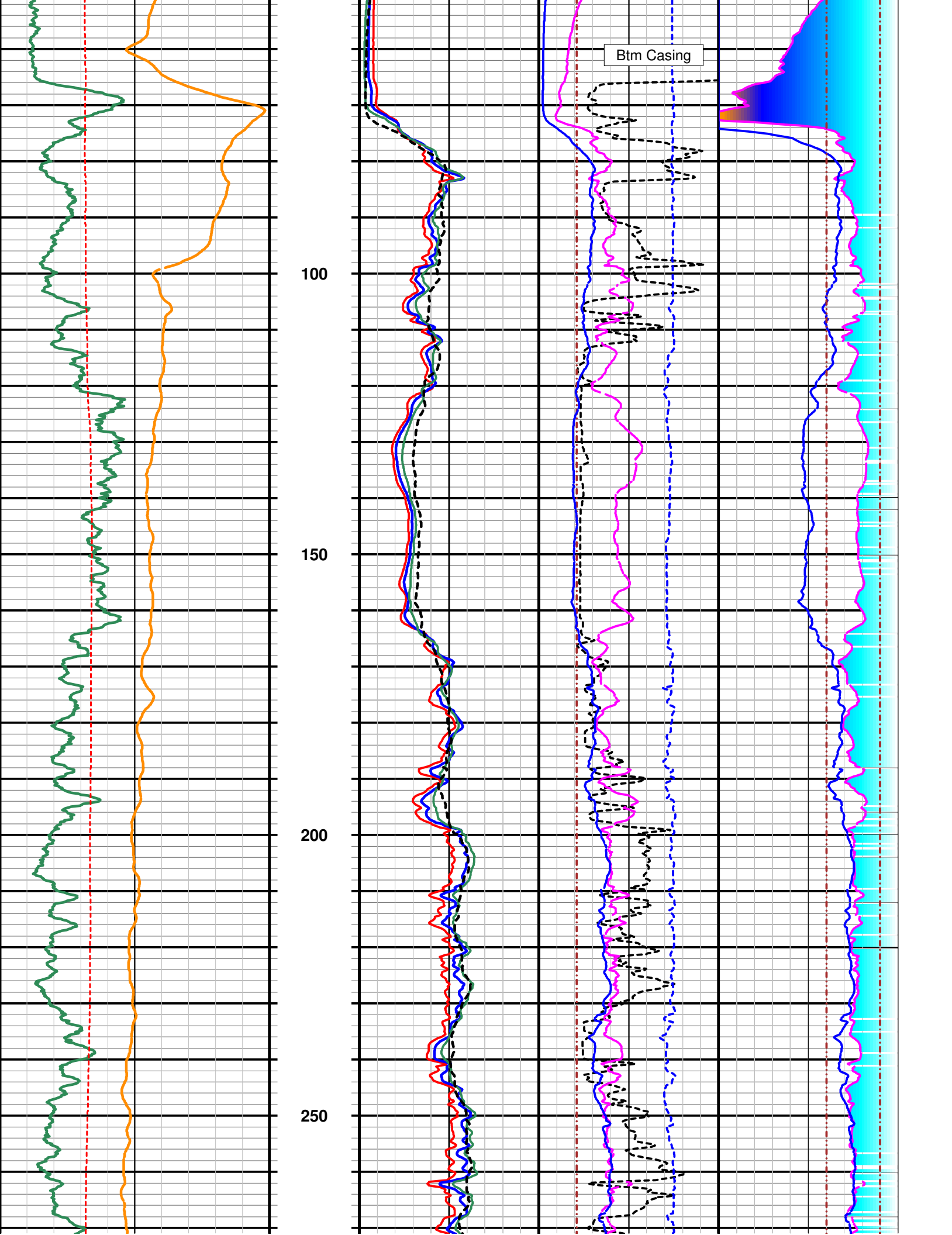
Tool Serial No. GAMMA (7320) RESISTIVITY (7179) CALIPER (7326)

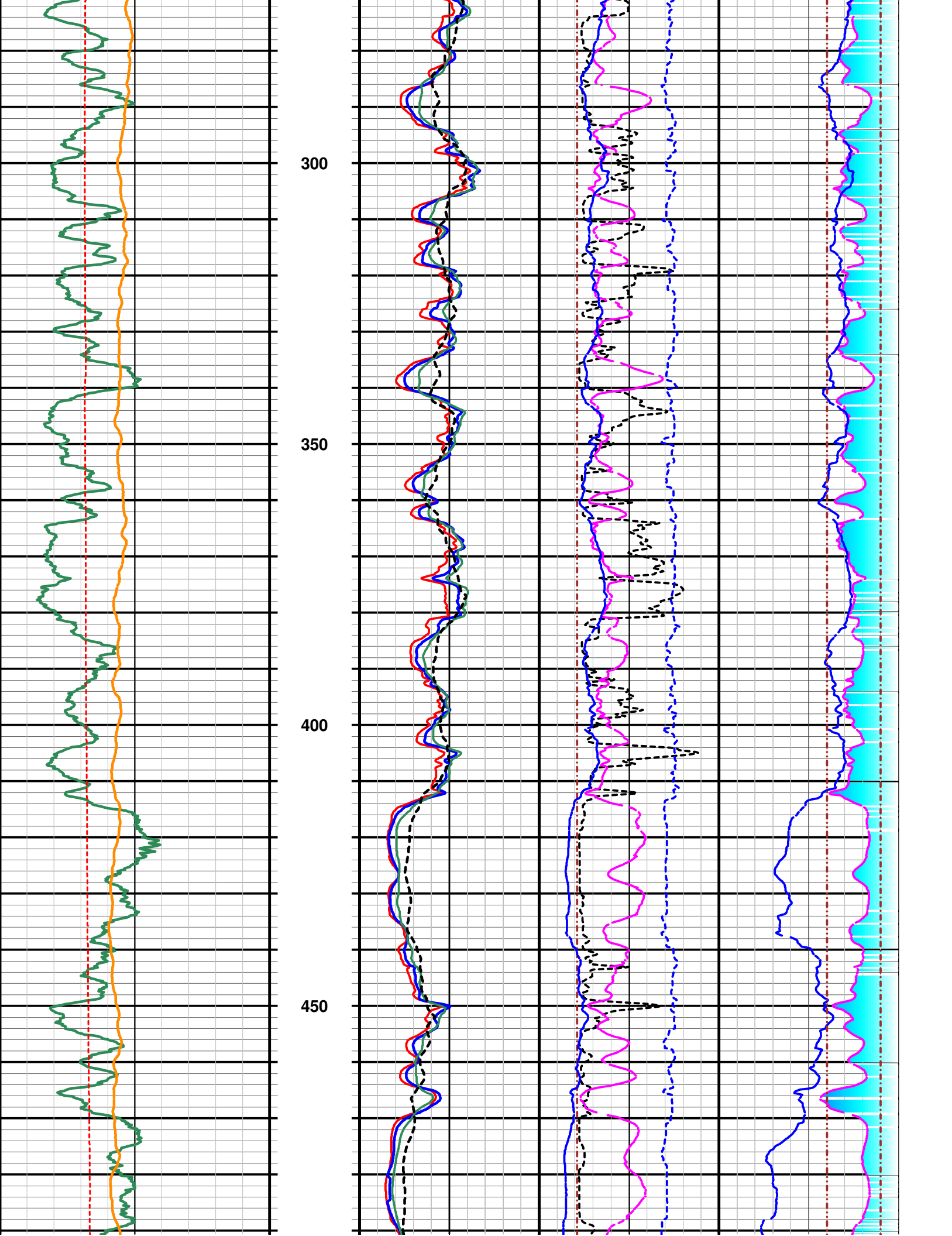
Comments: ALL MEASUREMENTS WERE TAKEN FROM ROTARY TABLE.

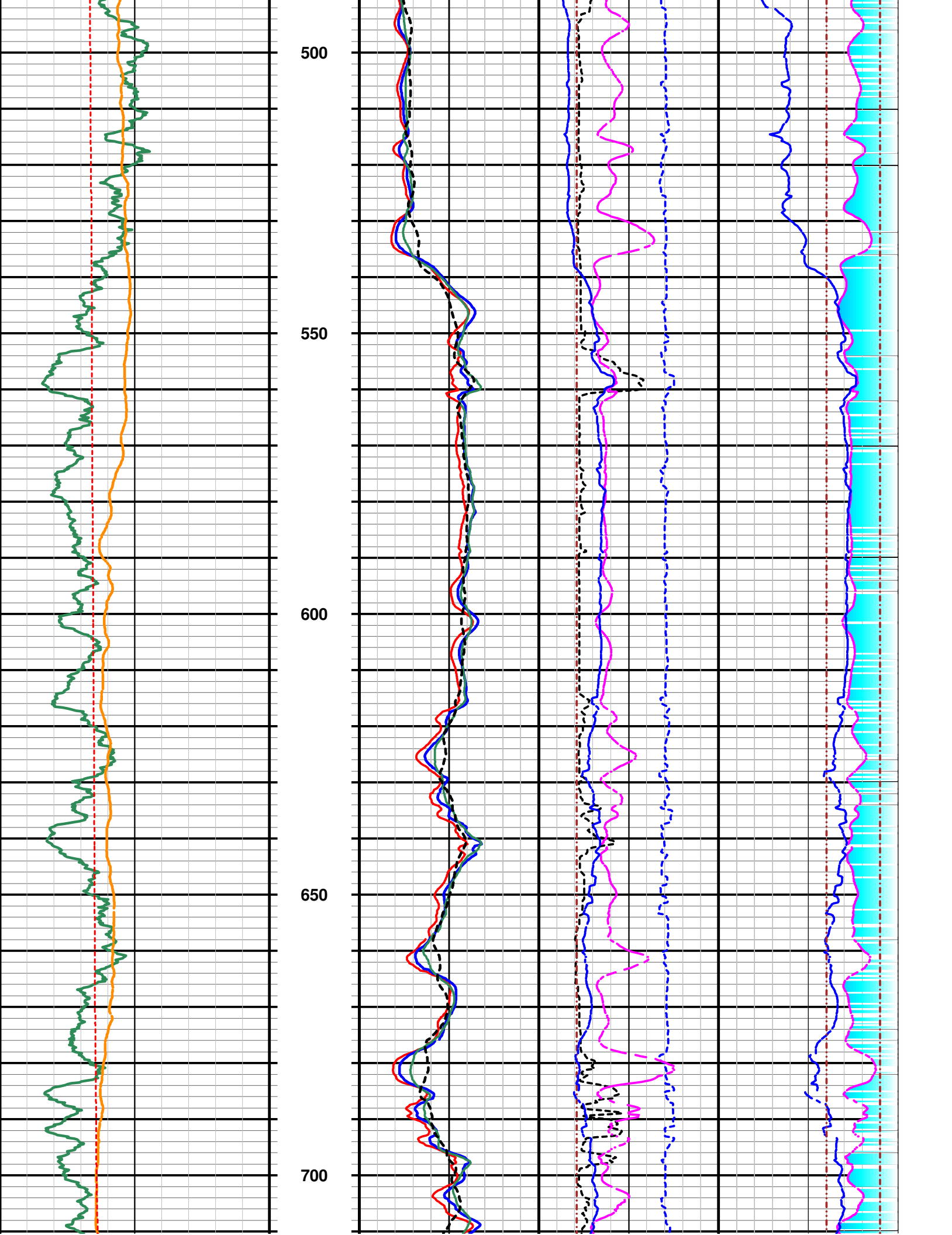
GR-API 0 API 150	Depth 1ft:240ft	N8_Corr 0 Ohm.m 20	Caliper-In 8 In 28	TDS-NaCl-RwRatio 5000 Mg/l 0
SP 200 mV 700		N16_Corr 0 Ohm.m 20	12.25" Bit Mark 8 28	TDS-NaCl-Humble 5000 Mg/l 0
FRes25C 0 Ohm-M 10		N32_Corr 0 Ohm.m 20	SPor-RH 0.1 V/V 0.6	500 Mg/L 5000 Mg/L 0
		N64_Corr 0 Ohm.m 20	Rw-Res-Ratio 0 Ohm-m 10	2000 Mg/L 5000 0
			Rw-Humble_SS 0 Ohm-M 10	

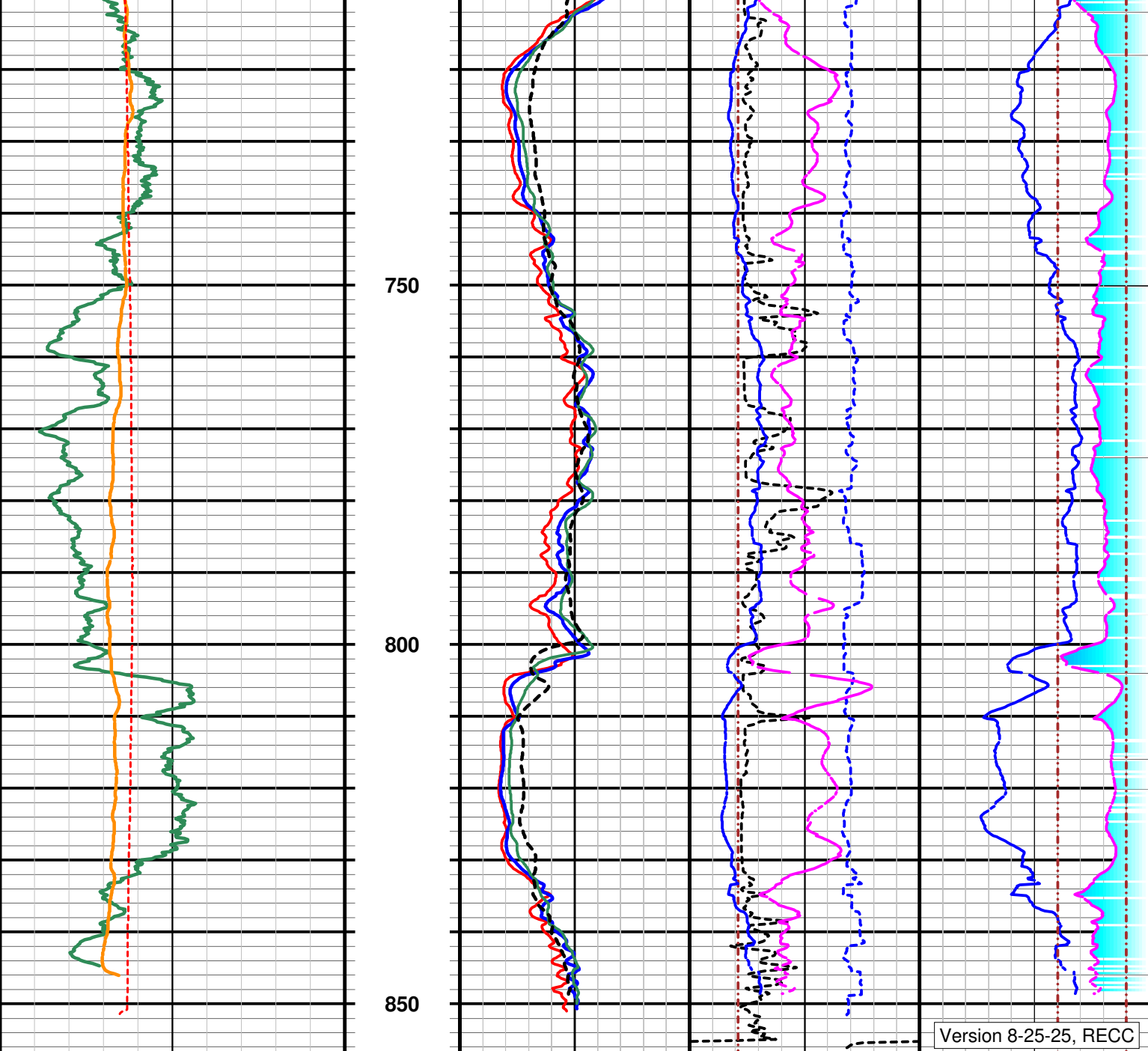
Corpus Christi Nueces Well No. 10 Est. Water Quality Log











Version 8-25-25, RECC

Corpus Christi Nueces Well No. 10 Est. Water Quality Log

0 Ohm-M 10		0 Ohm-M 10		0 Ohm-M 10		
FRes25C		Rw-Humble SS		5000 0		
-----		0 Ohm-m 10		-----		
200 mV 700		N64 Corr		2000 Mg/L		
SP		-----		5000 Mg/L 0		
0 API 150		0 Ohm.m 20		-----		
GR-API		N32 Corr		500 Mg/L		
-----		-----		5000 Mg/l 0		
1ft:240ft Depth	0 Ohm.m 20		8 28		TDS-NaCl-Humble	
	N16 Corr		12.25" Bit Mark		5000 Mg/l 0	
	-----		8 In 28		-----	
	0 Ohm.m 20		Caliper-In		TDS-NaCl-RwRatio	
N8 Corr		-----		5000 Mg/l 0		
-----		0 Ohm-m 10		-----		